



# iO Gateway

## IMPROVE YOUR MONITORING CAPABILITIES

In today's data-driven world, getting critical information from a building into a network management platform – and leveraging existing monitoring solutions – is essential. A unified view of power and cooling systems enables deeper insights into overall status and operational trends across multiple devices, including energy meters, DC system controllers, UPS, CRACs, building automation systems, fuel systems, ATS, and genset controllers.

Enabling Secure, integrated remote connectivity to the devices is the key to effective monitoring, real-time alarms, automation, visualization, and system optimization. With iO Gateway, data flows seamlessly from your building to the network, enhancing your existing monitoring capabilities – without compromise. Empower your facility management with greater visibility, actionable insights, and the confidence to optimize performance across all power and cooling infrastructures.



iO Gateway's web interfaces provide an intuitive way of managing its feature set.

### BENEFITS



MULTI-PROTOCOL GATEWAY



STREAMLINE DATA TRANSPORT



SECURE REMOTE MANAGEMENT PLATFORM



EVOLVING PLATFORM

# NEXT-GENERATION MULTI-PROTOCOL GATEWAY

## NETWORK CONNECTIVITY

iO Gateway features a dual ethernet port configuration with integrated industry-grade security for seamless connectivity with local smart devices and network or enterprise software.

## SERIAL CONNECTIVITY

The two RS-485 ports can simultaneously manage two distinct serial protocols or provide redundancy for a single protocol.

## SECURED CONNECTIVITY

Secured device connectivity is essential for any efficient and effective building management solution. That's why the iO Gateway relies on industry-grade software – such as Linux firewall – to ensure robust protection. In addition, secure, encrypted connections can be established using HTTPS.

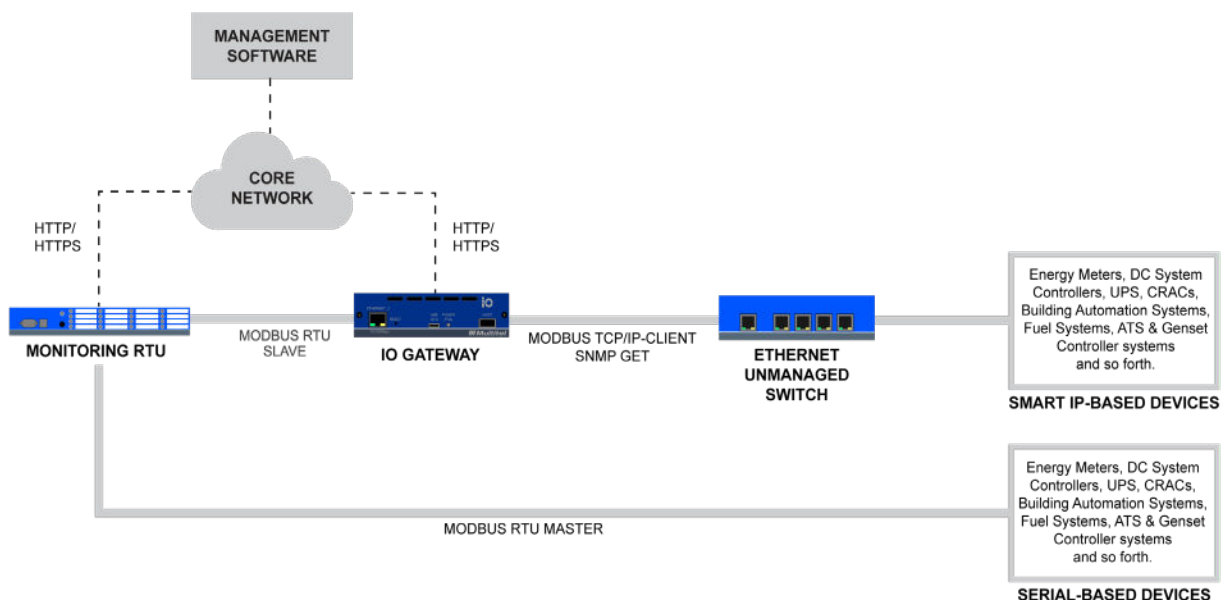
## PASSTHROUGH CAPABILITIES

The passthrough features allow users to retain existing smart device functions – such as web, console, and file transfer capabilities – even when those devices are located on a local network.

## PROTOCOLS

iO Gateway supports several protocols: HTTP/HTTPS, SNMP Get v1/2c/3, SNMP Agent v1/v2c/v3, Modbus TCP/IP Client/Server (Transparent Mode supported), Modbus RTU Client/Server, and LDAP MQTT and RADIUS available with version 2.0

## SMART, RELIABLE, FLEXIBLE AND IT-SECURED MONITORING TOOLS



# SPECIFICATIONS

## GENERAL SPECIFICATIONS

Operating Input Voltage	-40 to -60 VDC (A & B feed) w/ Fail Relay
Operating Temperature	-40 to +65°C [-40 to 149 °F]
Dimension	139.2 x 254.0 x 38.1 mm (5.5 in. x 10.0 in. x 1.5 in.)
Weight	900g (2 lbs.)

## COMMUNICATION / NETWORK INTEGRATION

Serial Ports	2x RS-485
Ethernet Ports	1x 1Gbps (back), 1x 100Mbps (front)
USB	3x USB 2.0
USB OTG	1x micro USB 2.0
Ethernet Protocols	HTTP/HTTPS
Serial Protocols	Modbus RTU (Client/Server)
IP Protocols	Modbus TCP/IP (Client/Server), SNMP Get v1/v2c/v3, SNMP Agent v1, v2c, v3, MQTT
Network Protocols	NTP, DNS, DHCP
Authentication Protocols	LDAP (Client), RADIUS (Client)
Remote Access Protocols	SSH
File Transfer Protocols	SFTP
CPU	1GHz Quad-Core
Memory	1 GB DDR3
Storage	8 GB

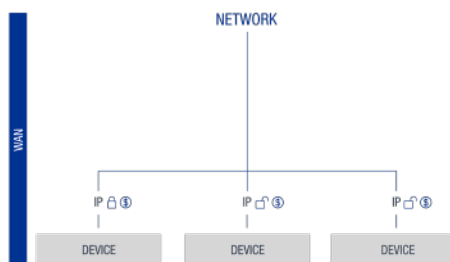
## CERTIFICATIONS

Safety	UL 62368-1:2014 Ed.2 CSA C22.2.#62368-1:2014 Ed.2
Emission	FCC Part 15, Subpart B   ICES-003

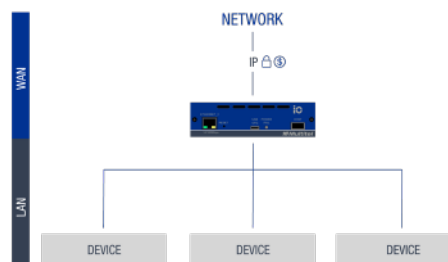
## WHY CHOOSE iO Gateway?

The iO Gateway is a comprehensive solution designed to keep pace with today's fast-moving technologies. It allows users to retain their existing monitoring solutions while also benefiting from the latest advancements and maintaining complete visibility of your devices. In addition, it strengthens cybersecurity through secure protocols and reduces the number of IP addresses needed across the network by enabling multiple devices to share a one single IP address.

### WITHOUT iO GATEWAY



### WITH iO GATEWAY



## KEY MARKETS SECTORS



TELECOMMUNICATIONS



POWER UTILITIES



RAILWAYS



CATV/BROADBAND

# Acquiring iO Gateway enables users to maintain and improve their existing monitoring solutions, all while benefiting from current technology trends.

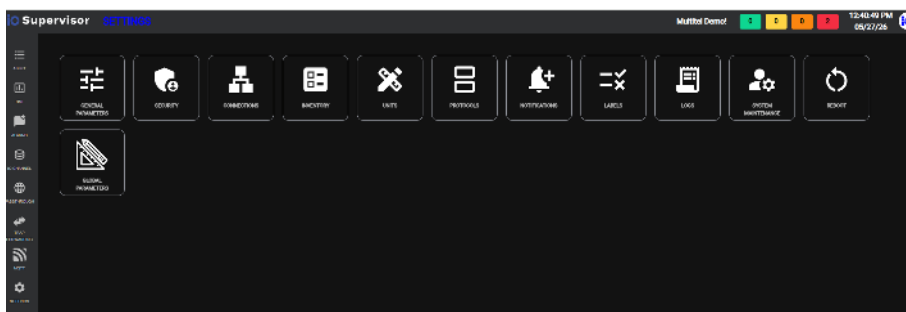
## Data source dashboard

Status	Asset Name	Communication Protocol	Manufacturer	Asset IP Address	Actions
●	Access 2000	Modbus I/RTU	Accessory	10.10.100.241	⋮
●	Alpha Cordex	SMB	Alpha	10.10.100.25	⋮
●	Camera Ultracolor	Modbus RTU	Camera		⋮
●	ETM1	Modbus RTU	Narda		⋮
●	ETM2	Modbus RTU	Narda		⋮
●	Libran Solutions - Hicap	Modbus RTU	Fluorid		⋮

## Passthrough

ID	Description	Protocol	Source Port	Destination IP	Destination Port	Additional Port	Transport Protocol	Special Mode	Action	State	Web Access
P1	Header	HTTP	1581	192.168.1.5	80		HTTP	111100-Header	Allow	On	Passthrough
P2	Alpha	HTTP	8082	10.10.100.21	80		HTTP	Header	Allow	On	Passthrough
P3	Cardb	HTTP	8100	10.10.100.83	80		HTTP	Header	Allow	On	Passthrough

## Settings interface



**Multitel**

3710 Wilfrid Hamel Blvd.  
 Quebec (QC) G1P 2J2  
 Tel 418.847.2255  
 Toll Free 1.888.685.8483  
 info@multitel.com

multitel-inc

Take advantage of the power and performance of our next-gen multi-protocol gateway.

Contact us today:  
**multitel.com**