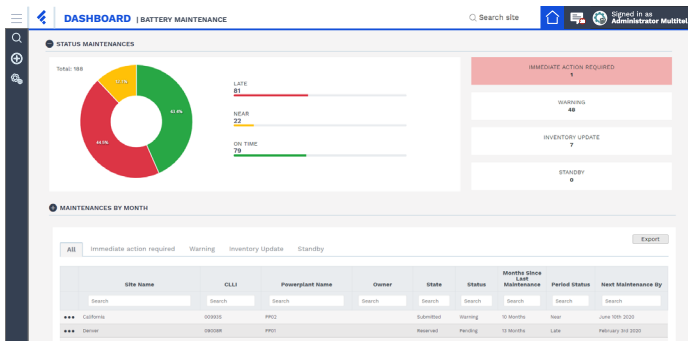


FIRMSuite BATTERY MANAGEMENT

Led by the desire to offer you solutions always more efficient and adapted to your needs, we are pleased to announce the new generation of FIRMSuite Battery Management.

Below are the most significant improvements and newest features that may interest you.

BATTERY PREVENTIVE MAINTENANCE DASHBOARD



INTEGRATED DASHBOARD

With FIRM Suite 5.3's new dashboard, get a real-time visualization of the number of overdue battery PMs (preventive maintenances), which sites are close to the end of a period, and which ones are completed for the entire network.

HISTORICAL DATA DASHBOARD

In just one click, access to the full historical readings of your batteries to monitor their performance levels and efficiency. Correlate other parameters to get the better overview of all of your batteries' lifespans.

EXPORT DASHBOARD

Quickly export the network preventive maintenance status or the historical readings in a lite .csv file.

BATTERY PREVENTIVE MAINTENANCE SCHEDULE

DYNAMIC PERIOD

Use the new dynamic period to never exceed the maximum battery PM interval schedule. The dynamic period starts on each individual site's battery PM date.

REMINDER

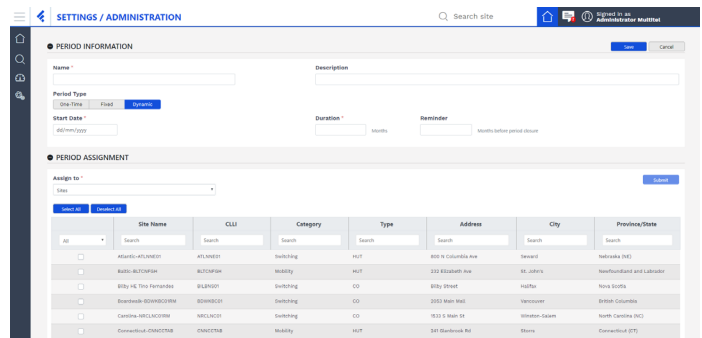
Set a reminder for each schedule period to ensure compliance with the required battery PM schedule.

ASSIGN BATTERY PREVENTIVE MAINTENANCE PERIOD BY BATTERY MODEL

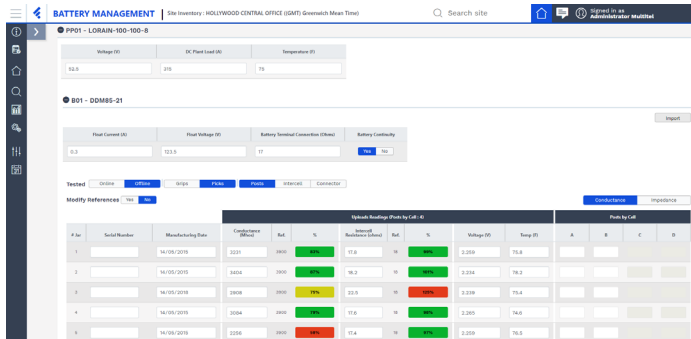
Set battery PM intervals by battery model to complete different PM procedures based on the battery type.

CHANGE PERIOD ASSIGNMENT

It is possible to remove site of an active period.



BATTERY PREVENTIVE MAINTENANCE FORM



INDIVIDUALLY MANAGE DC POWER SYSTEM MAINTENANCE PROCEDURES

Track PM for each DC power system individually to accommodate large site with different field technician responsible for power plant PM.

UNPLANNED BATTERY PREVENTIVE MAINTENANCE

Unplanned maintenance button allows you to submit corrective or emergency PM requests without impacting the current battery PM schedule.

NEW BATTERY MEASURE POINTS

Get a better overview of your battery by registering battery float current, float voltage and battery terminal connection.

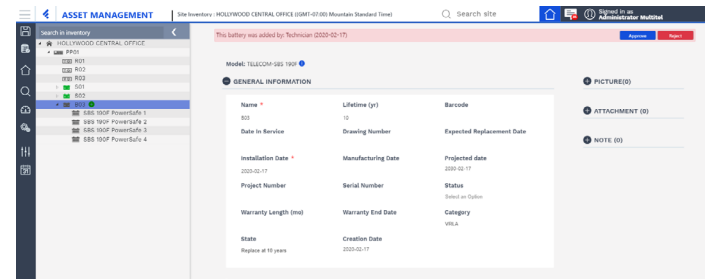
NEW CELL MEASURE POINTS

Get a better prediction of your cell's lifespan by registering intercell resistance and cell temperature.

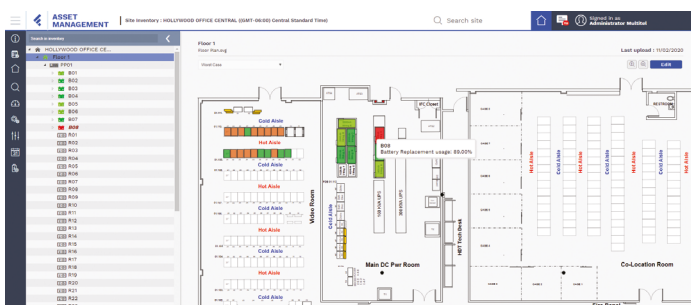
TEMPORARY INVENTORY ADJUSTEMENTS

To facilitate the data collection process and reduce truck rolls, allow your field technicians to do temporary inventory adjustments, which will become official assets upon managers approval. Field technicians can upload battery PM data even if the new inventory is not part of site's asset in the database.

INVENTORY UPDATE



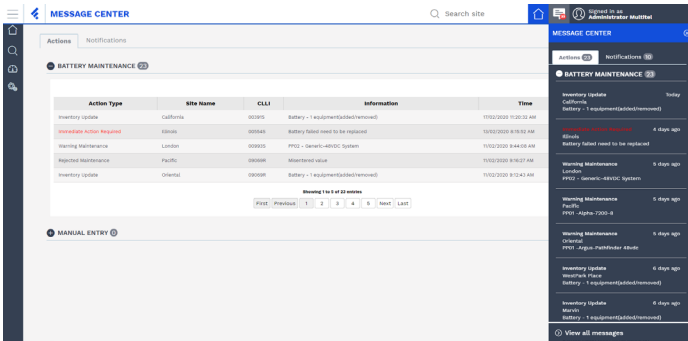
FLOOR PLAN VIEW



ADD BATTERIES ON YOUR FLOOR PLANS

Add your batteries on your floor plans to quickly identify which ones need to be replaced, based on your business rules and battery SOH, using a visual and color-coded 2D representations.

MESSAGE CENTER



Message Center gives Network Operations and Network Engineering an opportunity to avoid major mistakes by creating clear teamwork communications.

BATTERY FAILED NOTIFICATIONS

Get an instant notification when a battery fails.

STATUS MAINTENANCE NOTIFICATIONS

Get notified when battery PMs are not completed and close to exceeding your battery PM schedule.

IMMEDIATE ACTION REQUIRED NOTIFICATIONS

Get notified when battery PMs require immediate attention.

APPROVAL NOTIFICATIONS

Get notified on the battery PM performed and inventory updates require approval.

SPECIFICATION SHEET

LEGACY BATTERY MANAGEMENT vs 5.3

	FIRMSuite Legacy Battery Management	FIRMSuite Battery Management 5.3
DASHBOARD		
Maintenance progress chart	X	X
Conductance/Impedance bar chart	X	
Achievement maintenance by months		X
Maintenance overview list	X	X
PERIOD		
One time period	X	X
Fixed period		X
Dynamic period		X
Reminder Notification		X
PRIORITIZATION		
Configuration prioritization	X	
Allocation routines as per timespan selected	X	
Schedule algorithm run on approved maintenance	X	
Schedule algorithm run on last period	X	

LEGACY BATTERY MANAGEMENT vs 5.3

	FIRMSuite Legacy Battery Management	FIRMSuite Battery Management 5.3
PREVENTIVE MAINTENANCE		
Standby status	X	X
Note (immediate action required, publish note)	X	X
Reserve/Unreserve a maintenance	X	X
Share a maintenance	X	X
Export maintenance to PDF	X	
Attachment accepted	.C60 and .CSV files .JPG, .GIF image files .TXT, .DOC or .XLS files.	CSV files .JPG, .GIF image files .TXT, .DOC or .XLS, .XLSM
Import file accepted	Advantage type .CSV file, Alber type .CSV file, Ultra type .CSV file, PowerSure type .CSV files, C60 files	Advantage type .CSV file, Alber type .CSV file and Ultra type .CSV file
Power Plant measure points	Dc Plant Voltage, Dc Plant Current, Temperature	Dc Plant Voltage, Dc Plant Current, Temperature
Battery measure points		Float Current, Float Voltage, Battery Terminal Connection, Battery continuity
Cell measure points	Conductance, Impedance, Voltage	Conductance, Impedance, Intercell Resistance, Voltage, Temperature
Discharge Test	X	
Battery replacement form	X	
Automatic maintenance approbation	X	X
HISTORY		
Maintenance actions history	X	X
View historical maintenance	X	X
Historical reading	X (only last maintenance values)	X (historical trend)
INVENTORY UPDATE		
Database inventory update	X	
Temporary inventory update		X
REPORTS		
Battery Manufacturer Data	X (Excel)	X (Excel)
Battery Inventory	X (Excel)	X (Excel)
Battery Replacement	X (Excel)	X (Excel)
Battery Maintenance Status	X (Excel)	X (Interface)
NOTIFICATIONS		
Email notification	Battery replacement request, Immediate action required, Waiting for approval, Waiting for inventory update	Battery fail, Immediate action required, Inventory rejected, Inventory update, Maintenance rejected, Maintenance reminder, Warning maintenance
Message center		Battery fail, Immediate action required, Inventory rejected, Inventory update, Maintenance rejected, Maintenance reminder, Maintenance note, Warning maintenance

BUG FIXES

ASSET MANAGEMENT

- Fixed incorrect search result when an attachment or a note is searched in the tree structure.

RACK MANAGEMENT

- Fixed copy/paste function and duplication rack equipment in the tree structure. Equipments duplicate are now manage individually.

DATA GATERING

- Fixed incorrect historical audit hyperlink in the report.

FIRMSuite Legacy

- Multiple bugs interface has been fixed to optimize FIRM Legacy on the Chrome browser.

3710 Wilfrid Hamel Blvd.
Quebec, QC, G1P 2J2
Tel: 418.847.2255
Toll Free: 1.888.685.8483
info@multitel.com

Avoid costly fines by losing
your sites' service during
power outage.

Contact us today:
multitel.com