

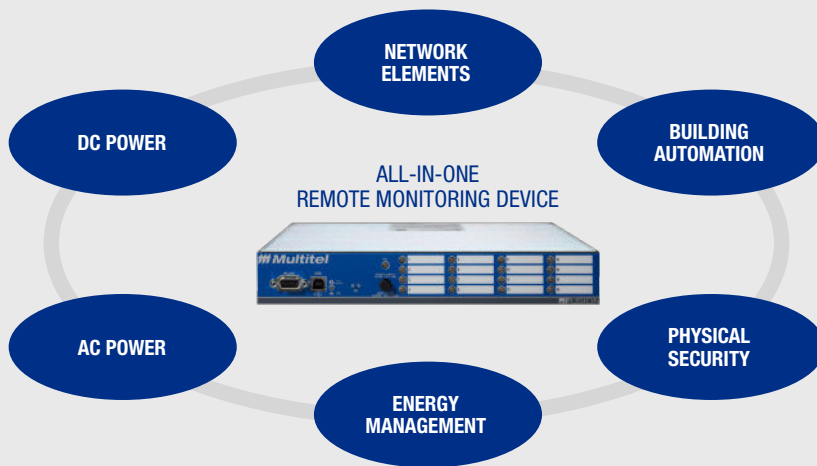


FUSION

THE ONLY ALL-IN-ONE REMOTE TELEMETRY UNIT YOU'LL EVER NEED.

Do you lack the visibility of your critical remote-sites or facilities? Are you looking to gain quick access to real-time information that can help you make better decisions regarding your critical assets, such as your batteries, HVACs and generators? Are you struggling with skyrocketing costs due to repetitive trucks rolls and maintenance, associated HR expenses and equipment damage that are deeply impacting your bottom line?

Then, you need to take a look at FUSION.



FUSION's comprehensive monitoring capabilities enable you to make proactive decisions for your most important assets.



BENEFITS



COST-EFFECTIVE SOLUTION



EASY TO USE AND TO DEPLOY



SECURE REMOTE MANAGEMENT PLATFORM



SEAMLESS CONNECTIVITY VIA SNMP AND MODBUS RTU



GROW AS YOU NEED

ALL-IN-ONE RTU SYSTEM

NETWORK ELEMENTS

Remotely manage your network elements with our Modbus and SNMP capable remote telemetry unit.

BUILDING AUTOMATION

Automate your HVAC cycles and site access control from a simple user friendly interface.

PHYSICAL SECURITY

Be advised in case of a site intrusion and get real-time visibility from your security cameras installed in and out of your critical infrastructures.

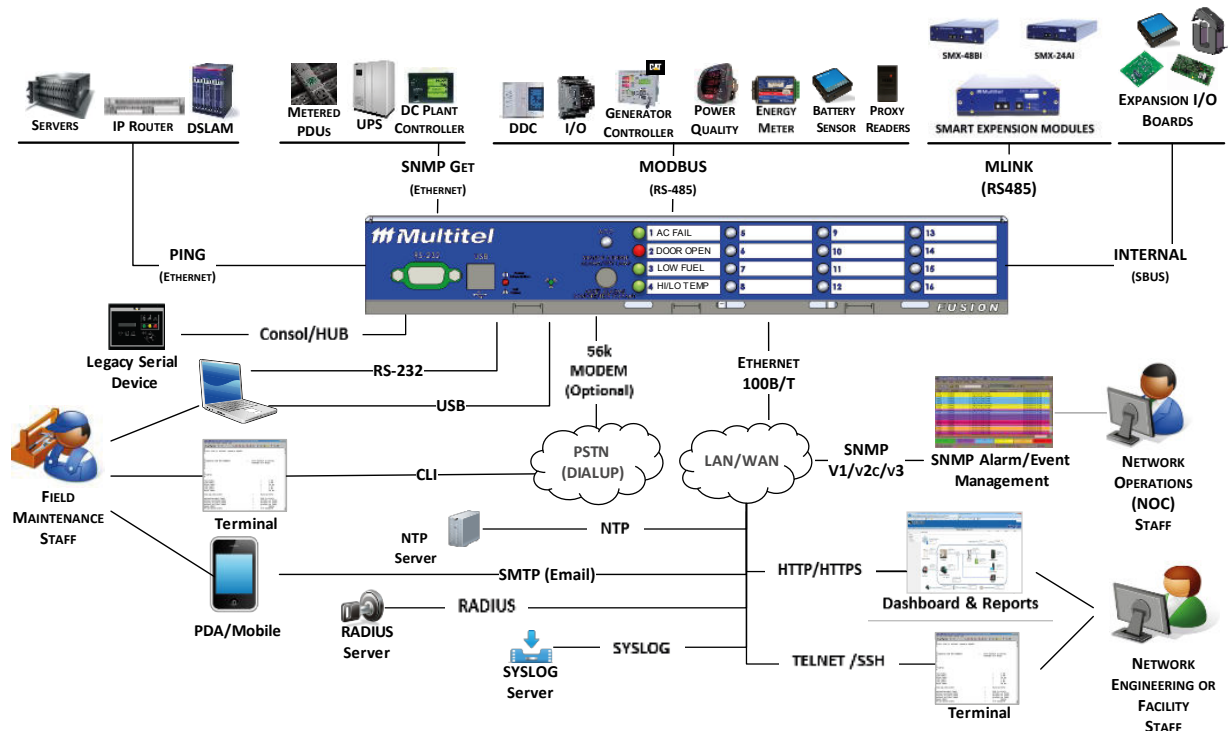
ENERGY MANAGEMENT

Get power and cooling capacity usage level information in user friendly human-to-machine (HMI) customisable views.

AC & DC POWER

Remotely manage your AC and DC power equipment from a single access point.

SMART, RELIABLE, FLEXIBLE AND IT SECURE MONITORING TOOLS



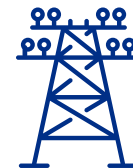
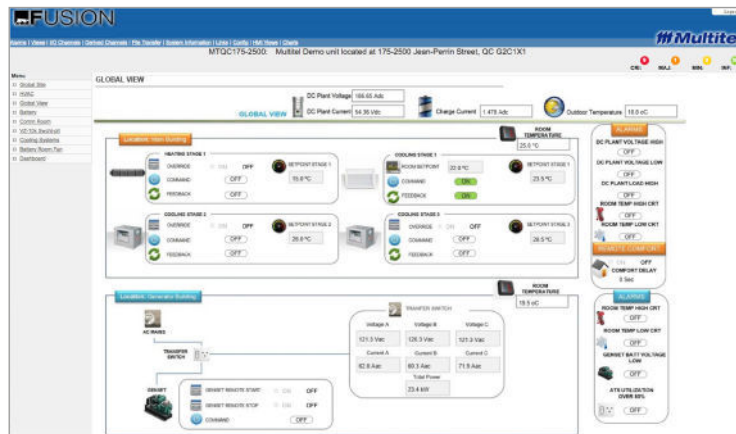
KEY MARKET SECTORS

Acquiring **FUSION** is more cost-effective than maintaining your legacy infrastructure.



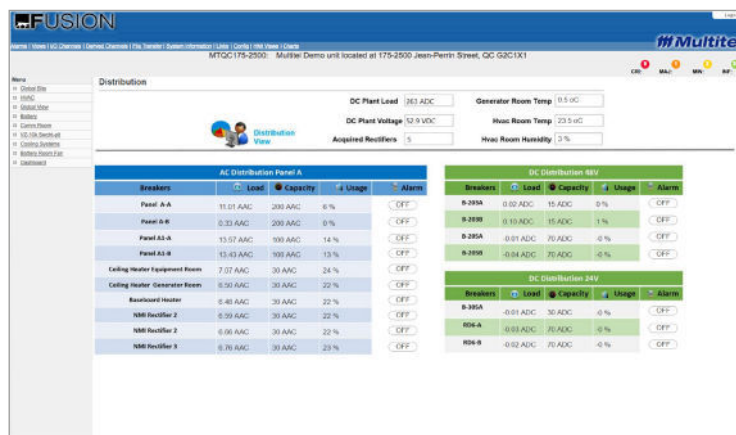
TELECOMMUNICATIONS

Building Monitoring and Control System



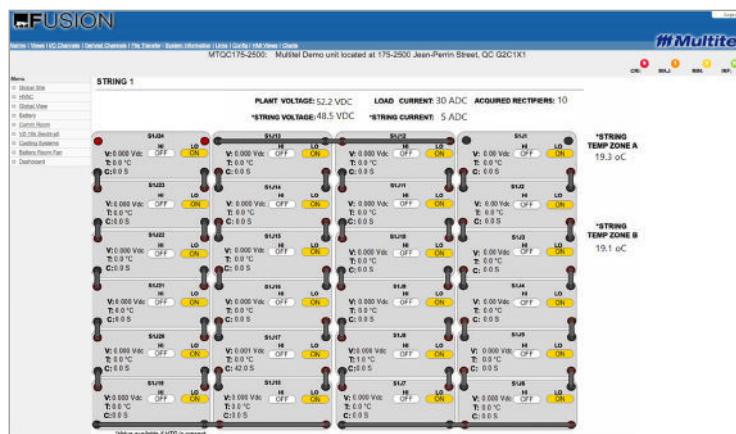
POWER UTILITIES

AC/DC Distribution Branch Circuit Monitoring



RAILWAYS

Battery Monitoring System



CATV/BROADBAND

WHY CHOOSE MULTITEL?

Multitel has over three decades of expertise and a long-standing, proven track record in providing robust, accurate and versatile solutions for North American telecom, power utilities, railways and CATV operators that need real-time visibility of their critical sites.

Our company is synonymous with unmatched customer service, market responsiveness, on-time delivery and a proximity with clients that is second to none. Throughout each project, we work *with* our clients to identify *their* unique needs and challenges, and offer pragmatic solutions attuned to *their* realities and goals. **Easy to do business with, Multitel delivers, time and again.**

With Multitel, customer satisfaction comes standard.

MONITORING AND CONTROL CAPABILITIES

GENERAL SPECIFICATIONS

| | |
|--------------------------------------|--|
| Flexible power supply | -40 to -60Vdc (A & B feed) 7,2 watts (120Vac is Optional) |
| Extended operating temperature range | -40 °C to 65 °C (-40 °F to 150 °F) |
| Dimension* | 4.45 cm X 27.9 cm X 26.6 cm (1.75 in. X 11 in. X 10.5 in.) |
| Weight | 2.7 kg (6 lb) |

EXPANSION I/O MODULES

| | |
|---------------------------|--|
| Analog Inputs | Up to 11 channels (0-60Vdc, 0-10Vdc, 50mV, AC Volts, AC Current, Temperature, Humidity) |
| Binary Inputs | Up to 64 channels referenced |
| Binary Outputs | Up to 6 relays form A and form C |
| MODBUS Modules | Up to 64 modules |
| Intelligent I/O Expansion | 18 analog channels - ANALOG Card, 48 binary input channels – SMX-48BI MODULE (Modbus), 32 relay channels - OUTPUT Card |
| MODBUS I/O Expansion | Performed by a distributed architecture of up to 30 Intelligent I/O cards and/or up to 64 ModBus modules |

COMMUNICATION / NETWORK INTEGRATION

| | |
|--------------------------------|---|
| Front Panel Display (Optional) | 16 DELs 3 colors including audible alarm |
| Serial Ports | 2 RS-232 ports and 2 RS-485 ports(115kbps max) Console (Hub) mode is supported |
| USB | Yes |
| Modem (Optional) | 56 kbps |
| Integrated Ethernet | Auto MDIX; 10/100 Mbit and 10 simultaneous users |
| Serial Protocols | MODBUS, TL1 (partial), Intelligent ASCII messaging, ISNMS, MLINK |
| IP Protocols | HTTP, HTTPS, SNMP v1/v2c/v3, SMTP (email), TELNET, SSH, SNMP Get, PING, RADIUS, SYSLOG, NTP |
| Languages | English and French |

EMBEDDED SOFTWARE

| | |
|--|---|
| File Transfer simple and user-friendly | Source code, statistics, historic, HMI views and configuration |
| Daily statistics recordings (Daily) | High, Low, Delta & Average for the last 32 days for all real and derived channels |
| Detailed data recordings (Trending) | 10 files of each 25 channels and 2000 samples each |
| Histogram data recording (Histo) | 10 Histogram files, 1 to 58 Bins |
| History data recordings (Events) | HISTORY file = 80 000 logs, 8000 protected; HISTLOG = 50; SYSLOG = 200 |
| Derived channels | 220 Arithmetic channels; 128 Binary Manuals; 10 Chronometers; 10 Watt-hour integration; 32 Constants; 32 Programmable Views; 1500 Thresholds (Setpoints); 32 Callouts; 10 Duty Cycle/Average; 32 Schedules; 200 Groups; 128 Prog Delays; 64 Time Set Points; 8 PID; 4 Lookup Tables; 4 Lead/Lag |



2500 Jean-Perrin Street
Suite 175
Quebec (QC) G2C 1X1
Tel: 418.847.2255
Toll Free: 1.888.685.8483
info@multitel.com

multitel-inc
 @Multitel_inc
 multitel.inc

Take advantage of the power and performance of our all-in-one remote telemetry units.

Contact us today:
multitel.com