

PRODUCT CHANGE NOTICE



FIRMSuite

Multitel is pleased to announce the release of the new version 5.0 of **FIRMSuite**.
Get up to speed by upgrading your software for an all-new user experience, user interface and feature-set.

THE PRESENT FEATURE-SET IS SUBJECT TO CHANGE WITHOUT NOTICE



NEW FEATURES

Totally redesigned graphical user interface and experience

FIRMSuite was revamped with an up-to-date flat design HTML5 interface, making it more pleasing to the eye and easier to navigate. Its reshaping offers a simplified user friendly experience for new and familiar users which shorten the learning-curve of the new platform.

Optimized network-wide visibility

In FIRM 4.X, Excel spreadsheets were often used to get a visual representation of your network status. In 5.0, we have optimized global visibility directly from the software user interface, allowing a quicker access to information, without leaving your web browser. Don't worry about your favorite reports - they still exist.

Centralize even more day-to-day management activities

Data Gathering Management¹ and Rack Management² allows your team to get quick access to essential information, helping you take critical decisions proactively. Moreover, Assets Management paired with our new map dashboard brings an efficient way to visualize your critical infrastructure network-wide.

Now compatible with the newest technology and browser versions

No need to start your browser in compatibility mode or beg your IT department not to upgrade your workstation - FIRM is now fully compatible and optimized for the latest version of Google Chrome.

[REQUEST YOUR UPDATE](#)

MAJOR ENHANCEMENTS

Dashboard

1. **(SKY-44)** - New map based dashboard, allowing network-wide visibility of critical sites.
2. **(SKY-226)** - Filter on-map sites to only display sites associated to the user.
3. **(SKY-204)** - Filter on-map sites by switching clusters' colors to match customizable business rules related to power plants, generators, batteries and rectifiers usage status.

Assets Management

1. **(SKY-135)** - New tree view to better visualize site structure and asset location.
2. **(SKY-170)** - Implementation of building components to get a better representation of site infrastructure by creating buildings, floors, rooms, zones, areas and more.
3. **(SKY-279)** - Colored indicators embedded in the tree view to have a quicker idea of infrastructure status based on customizable business rules.
4. **(SKY-224)** - Filter tree view by equipment type.
5. **(SKY-199)** - Model creation for racks, BDFB panels, controllers, converters, drain equipment, inverters and UPS equipment type.
6. **(SKY-275)** - Ability to show associated model information in the detailed equipment view.

Synchronisation with FIRM Legacy

1. **(SKY-233)** - Single login page from version 5.0 to access 4.X functionalities.
2. **(SKY-202)** - Partial equipment synchronisation.
3. **(SKY-295)** - Quick links from FIRMSuite 5.0 user interface to 4.X modules.

MINOR ENHANCEMENTS

Administration

1. **(SKY-16)** - Manage user groups as an administrator.
2. **(SKY-181)** - Creation of a new user profile interface for the new platform.

Data Gathering Management

1. **(SKY-300)** - Implementation of recurring audit periods.
2. **(DGM-16)** - Business rule management per audit and per scorecard.
3. **(DGM-46)** - Creation of on-the-fly score rules.
4. **(DGM-149)** - Categorize and filter workflow and audit templates.
5. **(DGM-147)** - Allow multiple audit periods in parallel.

Rack Management

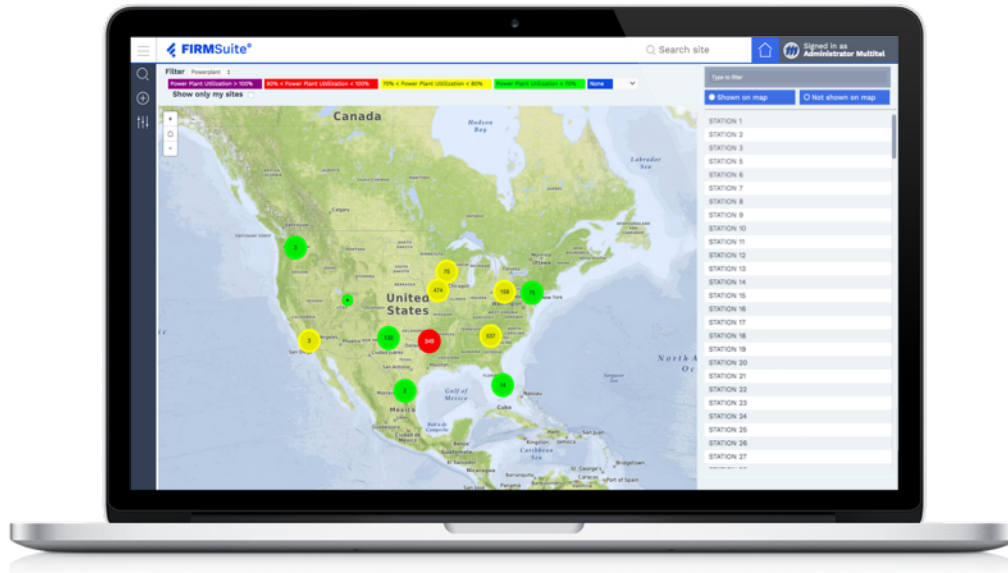
1. **(SKY-169)** - Implementation of Rack Management directly into Asset Management tree view to blend everything together in a user friendly view.

REQUEST YOUR UPDATE

AVAILABILITY

The new version 5.0 of FIRMSuite is available as of November 2017.

Multitel is committed to provide only the highest quality products for your needs. If you have questions regarding this product change notice, please contact your Multitel sales representative.



REQUEST YOUR UPDATE

¹ Purchase required to access Data Gathering Management.

² Purchase required to access Rack Management.

2500 Jean-Perrin ST Suite 175
Quebec QC G2C 1X1
Tel: 418 847.2255
Toll Free: 1.888.685.8483
info@multitel.com

[in](#) multitel-inc [t](#) @Multitel_inc [f](#) multitel.inc

Always know your at-risk sites and manage their weakest link today.

Contact us today:
multitel.com